

KEP 450 PUMP



Applications:

- Cutting, turning, milling, boring, grinding and similar applications of the machine tools,
- Filtration systems,
- Circulation systems.
- KEP Pumps are used for pumping of cutting / cooling fluids.

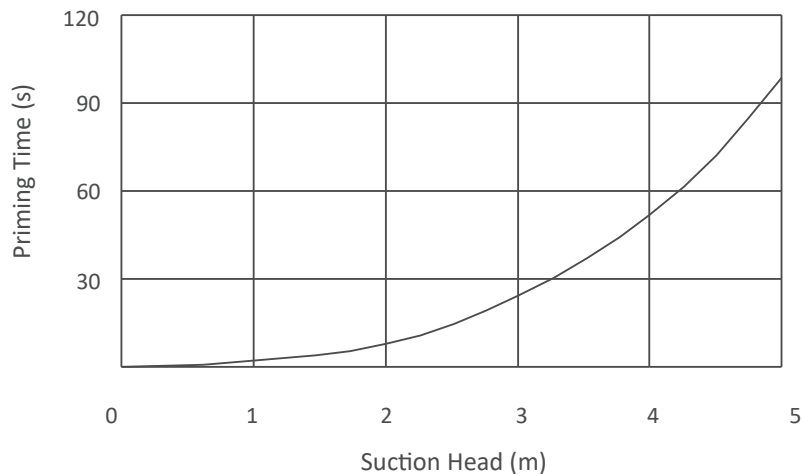
Fluid Specifications:

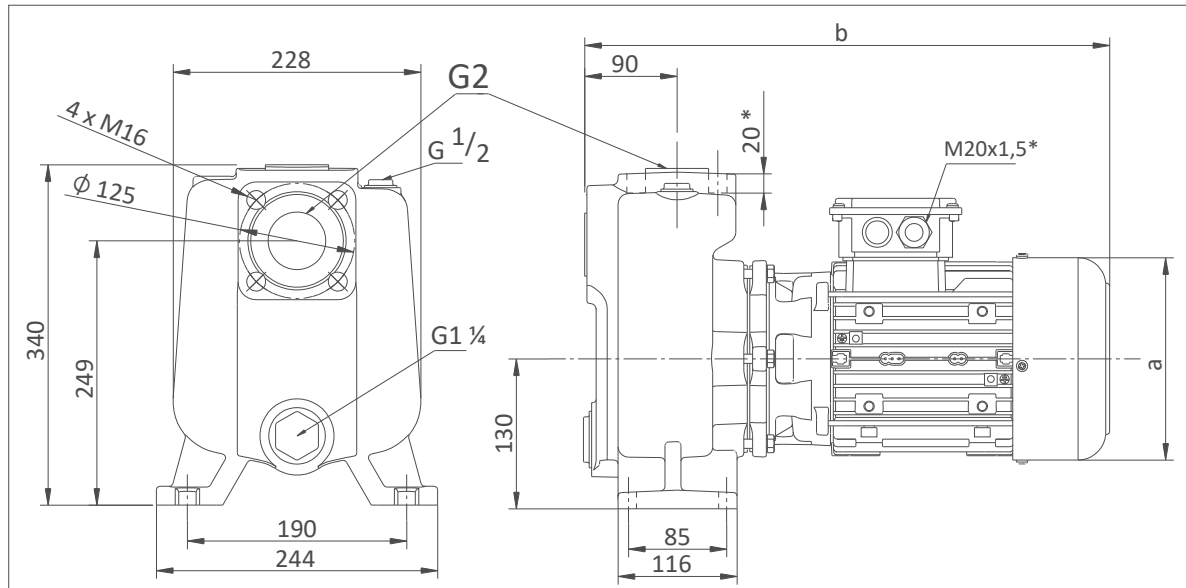
- Coolants,
- Cutting oils,
- Grinding oils,
- Water
- Chip containing liquids (max. 12 mm)
- Fluid temperature 0...60 °C
- Kinematic viscosity 1...30 mm²/s

Materials:

Pump body	: Cast iron - DIN GG25
Motor Flange	: Cast iron - DIN GG25
Impeller	: Cast iron - DIN GG25
Shaft	: Stainless steel - AISI 420 (DIN 1.4021)
Mechanical Seal	: C-SiC-Viton
Electric motor	: 3 phase induction motor - 2 pole Optionally 4-pole, Protection degree IP 54

Suction Head and Priming Time





DIMENSIONS & NOMINAL VALUES

TYPE	mm		Weight kg	Power kW	Voltage V(Δ/Y)	Frequency Hz	Rated current A	Speed rpm
	a	b						
KEP 450/135-4	176	485	44	1.1	230/400	50	4,85/2,8	1440
KEP 450/120			45	2.2			7.79/4.5	2905
KEP 450/128	194	515	52	3.0			10.39/6.0	2905
KEP 450/135			54	4.0			13.68/7.9	2900

* The performance curves are based on 1 mm²/s (cSt) kinematic viscosity values and 997 kg/m³ density

** Curve tolerance according to ISO 9906:2012 Grade 3B.

Performance Curve

